

PHAROS 

2x2 MIMO Sector Antenna

TL-ANT2424MD / TL-ANT5830MD



Highlights

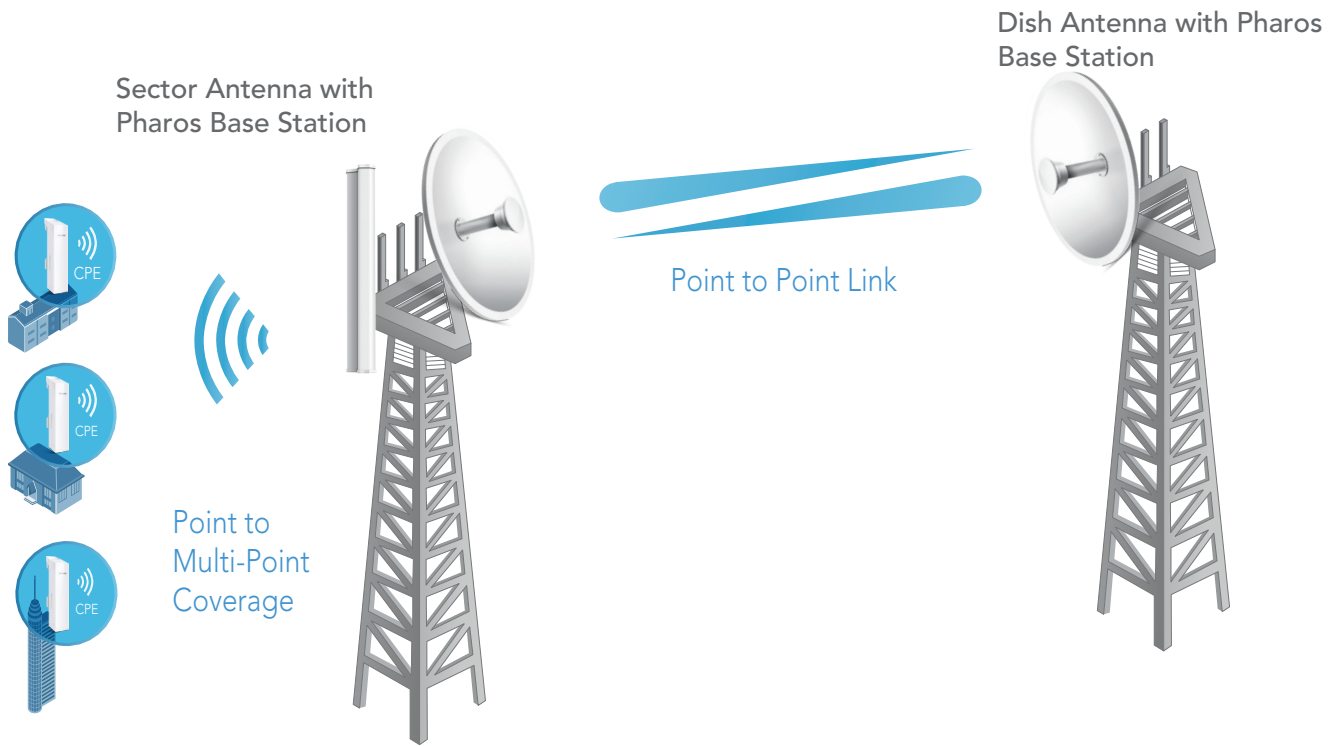
- High gain directional operation, long distance transmission, ideal for Point to Point backhaul connection
- Easy Installation, seamlessly integrated with the Pharos Base Station
- MIMO technology for higher throughput
- Weatherproof design provides protection in harsh environments

Description

The Pharos Dish Antenna is a 2x2 MIMO Dish Antenna that is ideal for outdoor use when attached to a Pharos Base Station. These antennas, which feature high-gain directional transmission patterns, are excellent for building long distance Point-to-Point link.

Scenarios/Topology

A TL-ANT5830MD or TL-ANT2424MD, installed with a Pharos Base Station, is ideal for supporting long distance Point-to-Point data transmission.



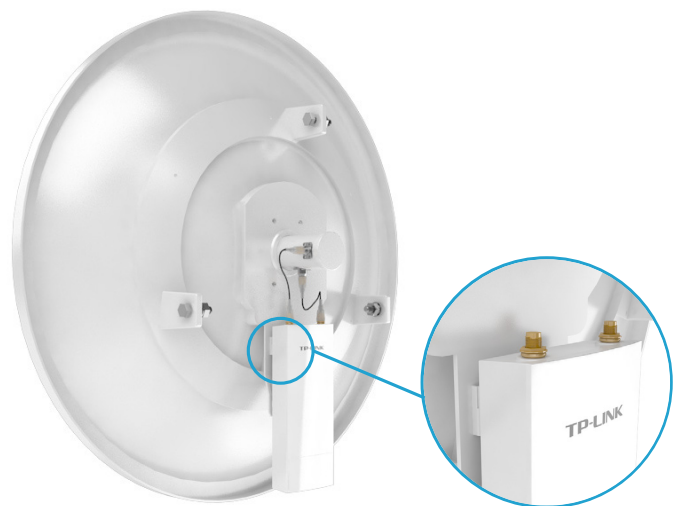
Easy Installation

Designed with a built-in mount, TP-LINK dish antenna (TL-ANT5830MD/TL-ANT2424MD) work seamlessly with Pharos Base Stations and no tools are required for installation.

1

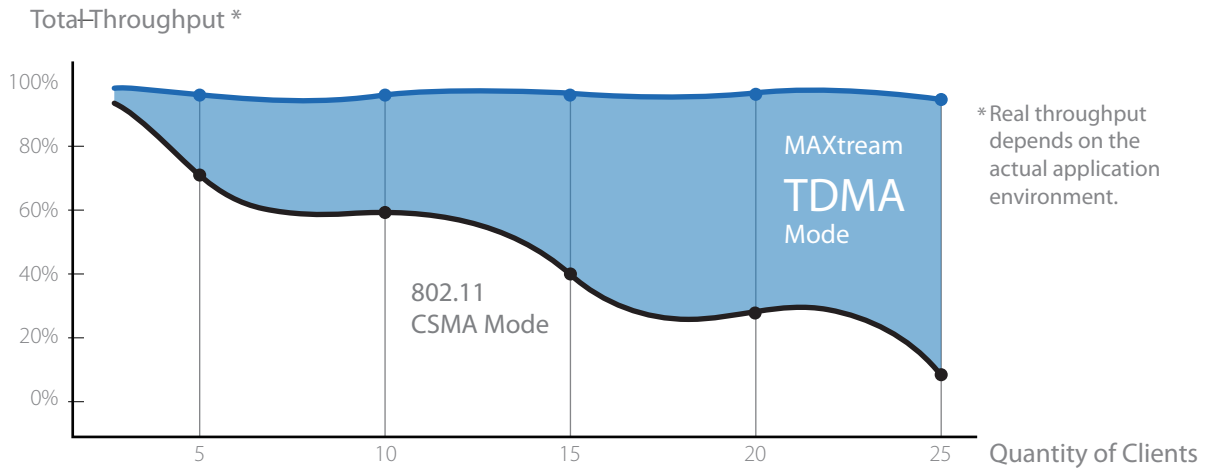


2



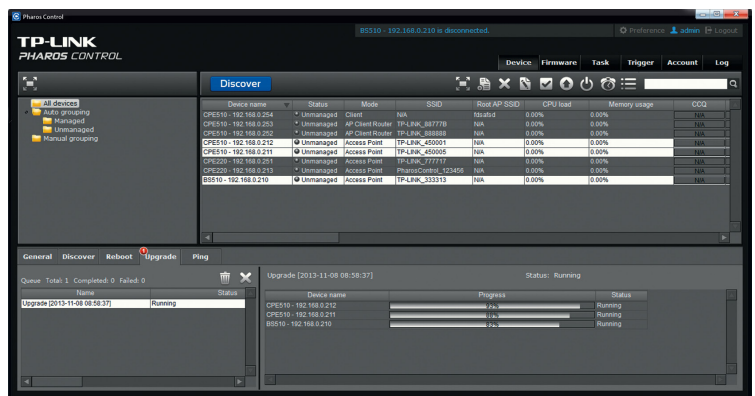
MAXstream TDMA Protocol

As networks grow in scale, wireless devices often compete for access to a single data connection, resulting in diminished throughput and an inferior experience for the end-user. Pharos Series devices utilize MAXstream TDMA Technology to counteract this competition and ensure that data transfer rates remain high, even as demand increases.



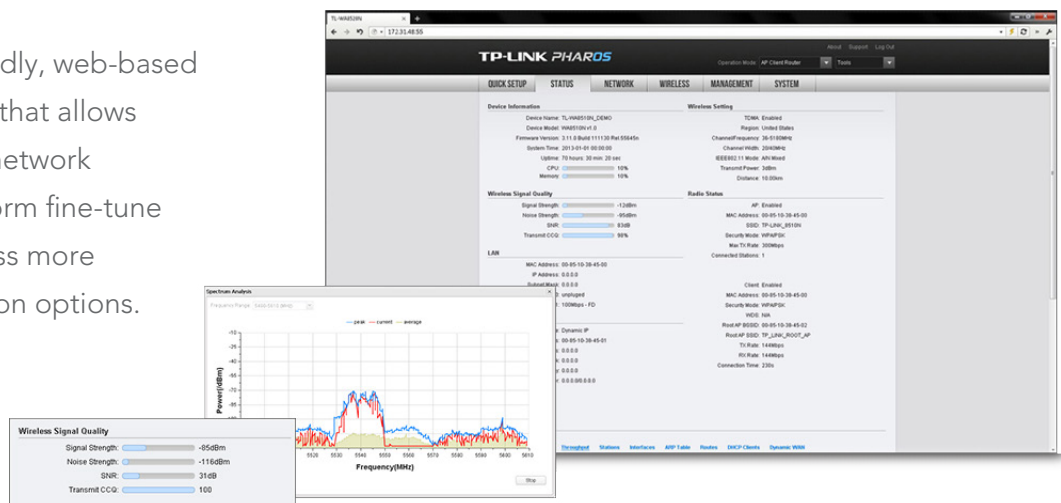
Pharos Control

Pharos Control is a centralized management software that allows users to easily manage network devices from any PC on the network. It provides ultimate convenience for users who wish to control device discovery, monitor network status, upgrade device firmware, or perform other network maintenance tasks.



Pharos OS

Pharos OS is a user-friendly, web-based management system that allows advanced users and network professionals to perform fine-tune calibrations and access more advanced configuration options.



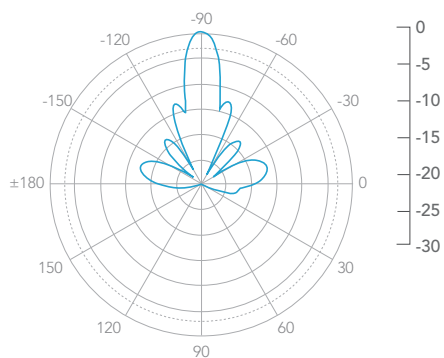
Specifications

	TL-ANT2424MD
Frequency Range	2.3 ~ 2.7 GHz
Gain*	24dBi
VSMR	1.8 Max
HPOL Beamwidth (3dB)	6°
VPOL Beamwidth(3dB)	6°
Elevation Beamwidth (3dB)	6°
F/B Ratio	32dB Min
Impedance	50Ω
Interfaces	RP-SMA
Polarization	Horizontal & Vertical
Mounting	Pole Mount
Survival Wind Speed	241 Km/h
Standards	RoHS, WEEE

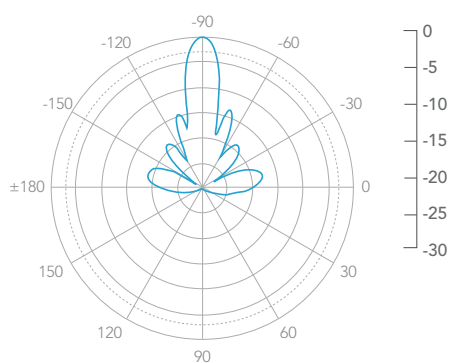
*Exclude Cable Loss

Radiation patterns

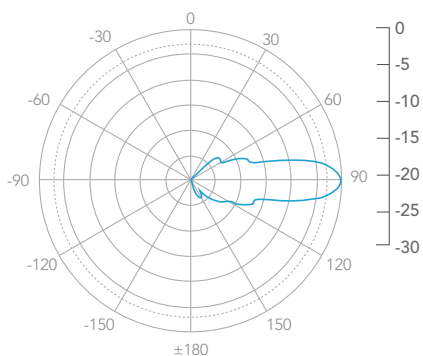
Horizontal Azimuth



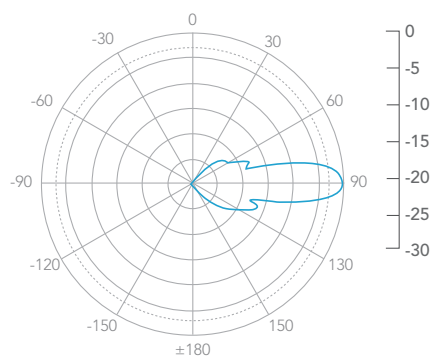
Vertical Azimuth



Horizontal Elevation



Vertical Elevation



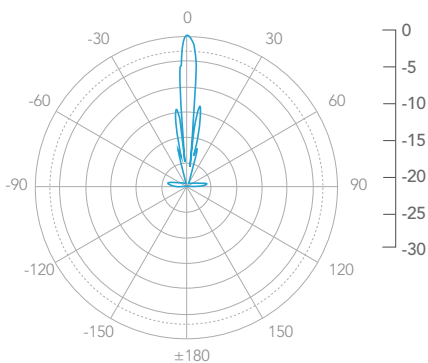
Specifications

	TL-ANT5830MD
Frequency Range	5.0 ~ 6.0 GHz
Gain*	30dBi
VSMR	1.8 Max
HPOL Beamwidth (3dB)	6°
VPOL Beamwidth(3dB)	6°
Elevation Beamwidth (3dB)	6°
F/B Ratio	34dB Min
Impedance	50Ω
Interfaces	RP-SMA
Polarization	Horizontal & Vertical
Mounting	Pole Mount
Survival Wind Speed	241 Km/h
Standards	RoHS, WEEE

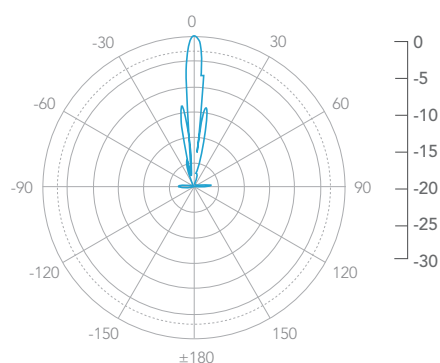
*Exclude Cable Loss

Radiation patterns

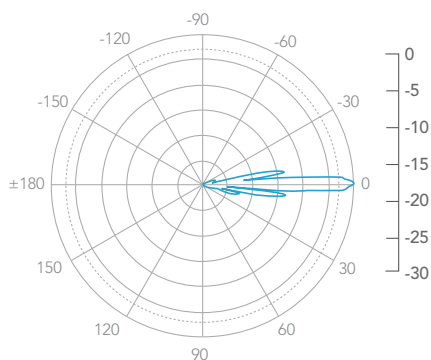
Horizontal Azimuth



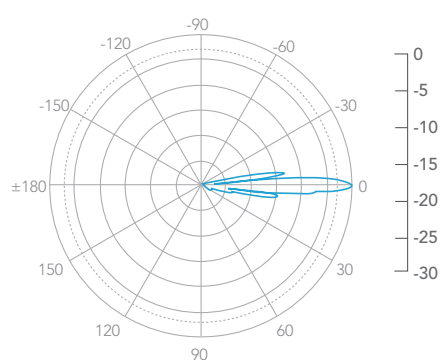
Vertical Azimuth



Horizontal Elevation



Vertical Elevation



Ordering Information

Ideal to use with



- 2.4GHz 300Mbps Outdoor Wireless Base Station WBS210

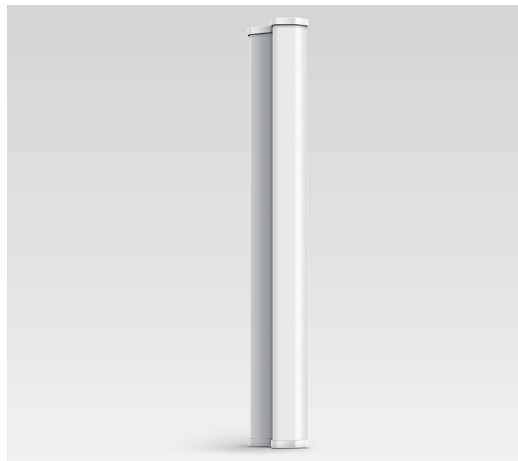


- 5GHz 300Mbps Outdoor Wireless Base Station WBS510

Related Products



- 2.4GHz/5GHz 300Mbps Outdoor CPE CPE210/CPE220/CPE510/CPE520



- 2.4GHz 15dBi/ 5GHz 19dBi 2x2 MIMO Sector Antenna TL-ANT2415MS/TL-ANT5819MS



Details:<http://www.tplink.com/en/Support>
German/Austrian/Swiss users are not included
www.tp-link.com

Specifications are subject to change without notice. TP-LINK is a registered trademark of TP-LINK Technologies Co., Ltd. Other brands and product names are trademarks or registered trademarks of their respective holders. Copyright © 2016 TP-LINK TECHNOLOGIES CO., LTD. All rights reserved.