

**PHAROS** 

## 2x2 MIMO Sector Antenna

TL-ANT2415MS / TL-ANT5819MS

### Highlights

- High gain directional operation, wide coverage, ideal for Point to Multi-Point connections.
- Easy Installation, seamlessly integrated with the Pharos Base Station
- MIMO technology for higher throughput
- Weatherproof design provides protection in harsh environments

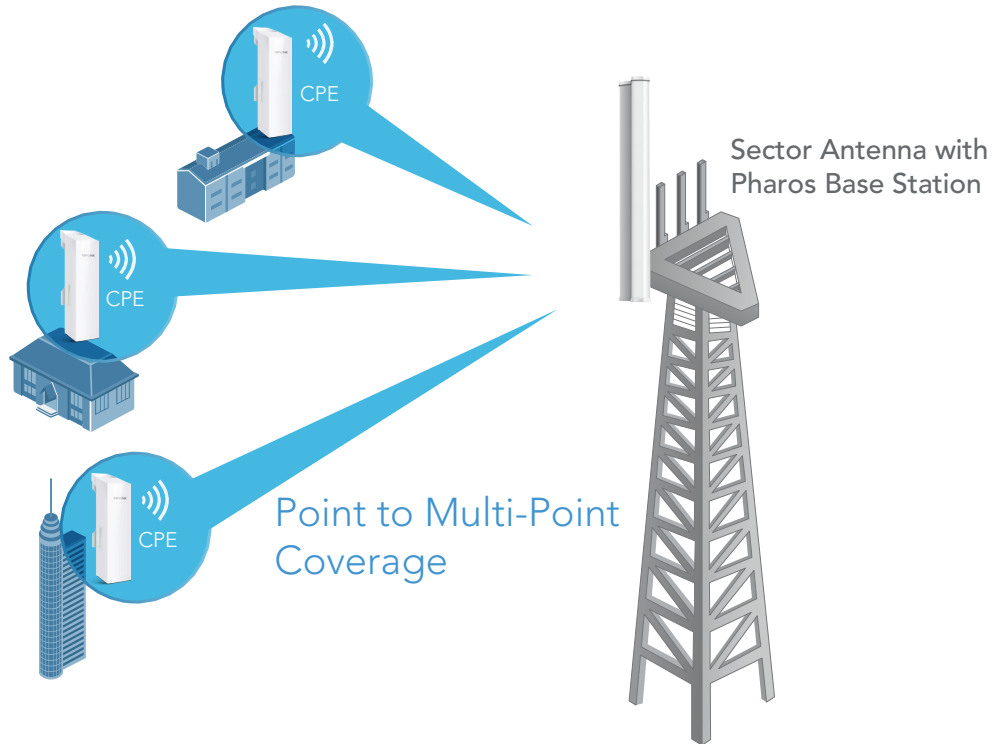
### Description

The Pharos Sector Antenna is a 2x2 MIMO Sector Antenna that is ideal for outdoor use when attached to a Pharos Base Station. These antennas, which feature high-gain directional transmission patterns, are excellent for building long distance Point-to-Multipoint coverage.



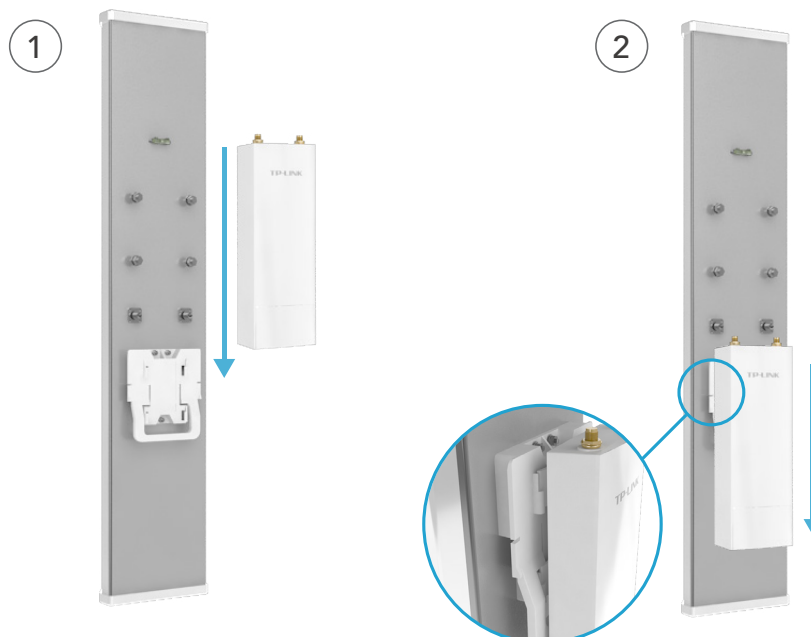
## Scenarios/Topology

A TL-ANT5819MS or TL-ANT2415MS, installed with a Pharos Base Station, is ideal for supporting large area Point-to-Multipoint data transmission.



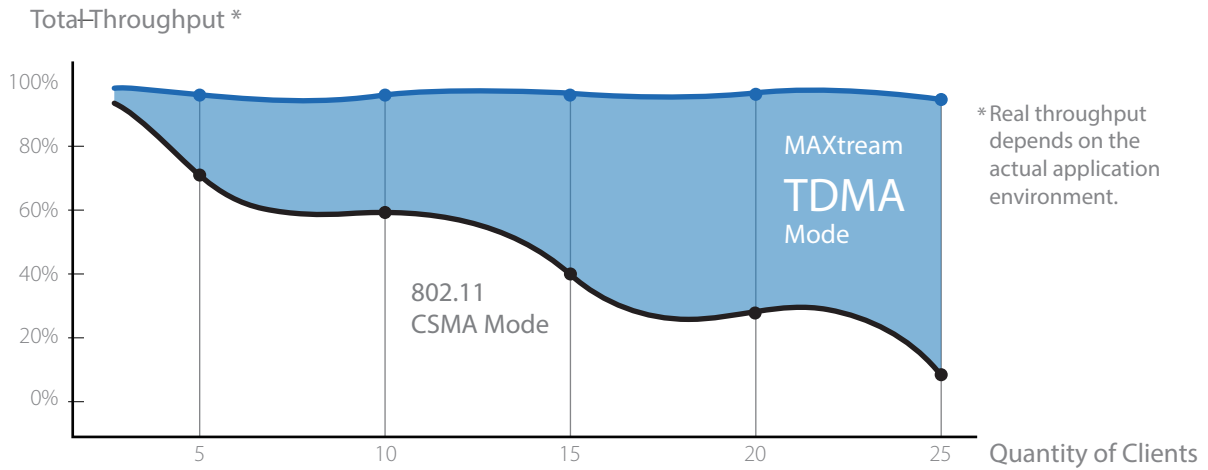
## Easy Installation

Designed with a built-in mount, TP-LINK sector antennas (TL-ANT5819MS/TL-ANT2415MS) work seamlessly with Pharos Base Stations and no tools are required for installation.



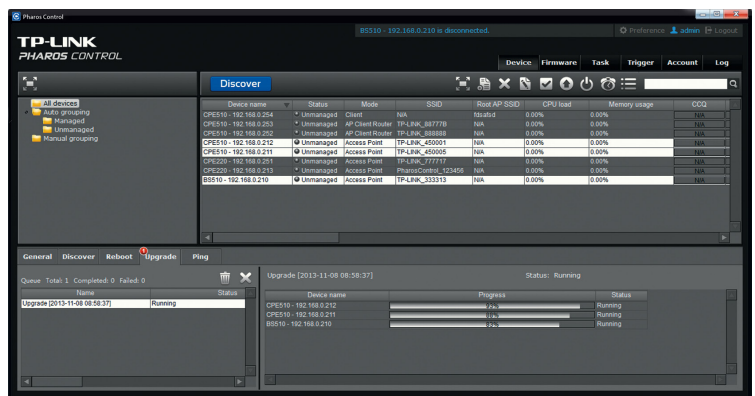
# MAXstream TDMA Protocol

As networks grow in scale, wireless devices often compete for access to a single data connection, resulting in diminished throughput and an inferior experience for the end-user. Pharos Series devices utilize MAXstream TDMA Technology to counteract this competition and ensure that data transfer rates remain high, even as demand increases.



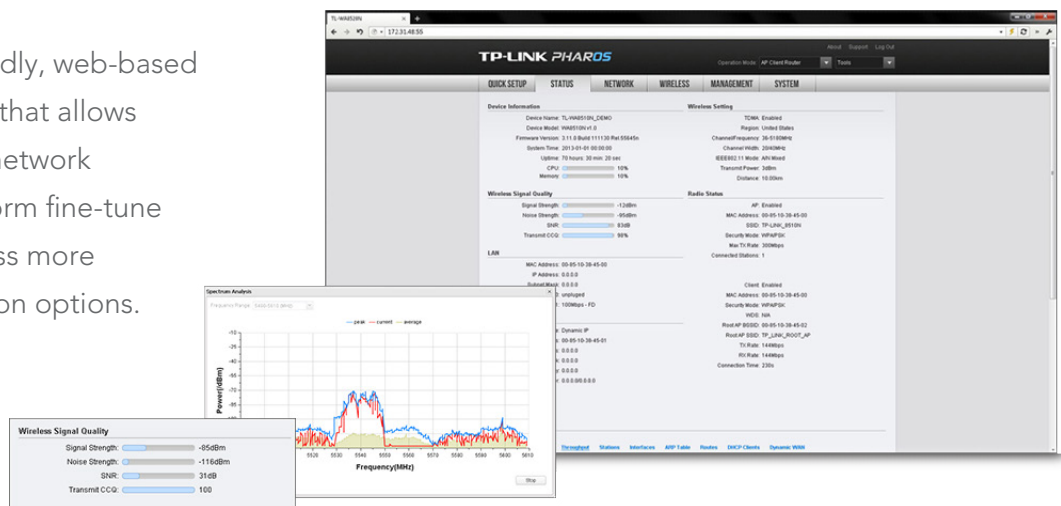
# Pharos Control

Pharos Control is a centralized management software that allows users to easily manage network devices from any PC on the network. It provides ultimate convenience for users who wish to control device discovery, monitor network status, upgrade device firmware, or perform other network maintenance tasks.



# Pharos OS

Pharos OS is a user-friendly, web-based management system that allows advanced users and network professionals to perform fine-tune calibrations and access more advanced configuration options.



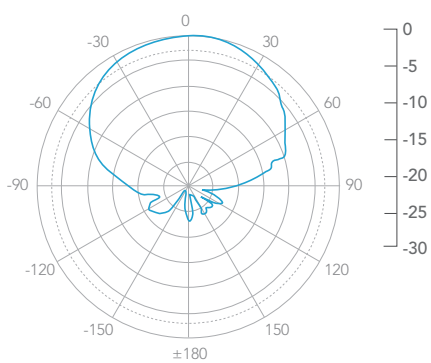
# Specifications

	TL-ANT2415MS
Frequency Range	2.3 - 2.7GHz
Gain*	15dBi
VSWR	1.8 Max
HPOL Beamwidth	120°(6dB) & 90°(3dB)
VPOL Beamwidth	120°(6dB) & 90°(3dB)
Elevation Beamwidth	8°
Electrical Downtilt	0°
F/B Ratio	25dB Min
Impedance	50Ω
Interfaces	RP-SMA
Polarization	Vertical & Horizontal
Mounting	Pole Mount
Survival Wind Speed	241km/h
Standards	RoHS, WEEE

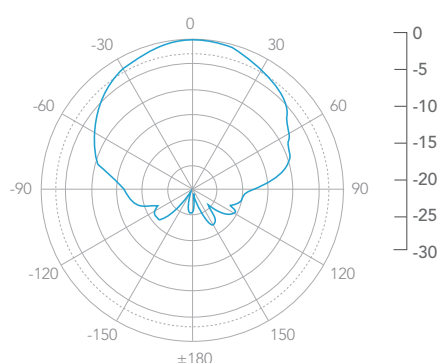
\*Exclude Cable Loss

## Radiation patterns

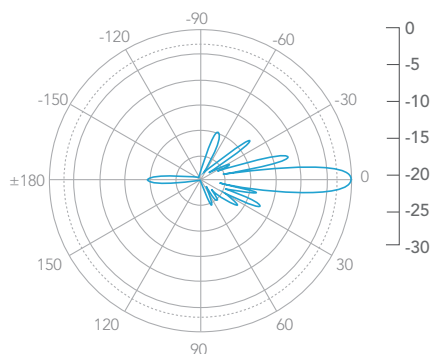
Horizontal Azimuth



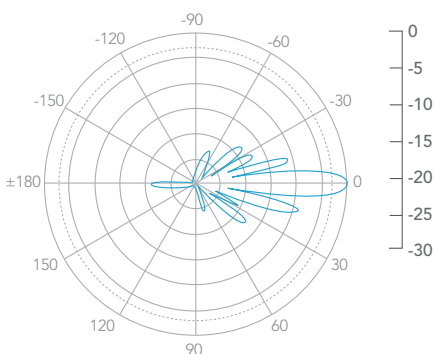
Vertical Azimuth



Horizontal Elevation



Vertical Elevation



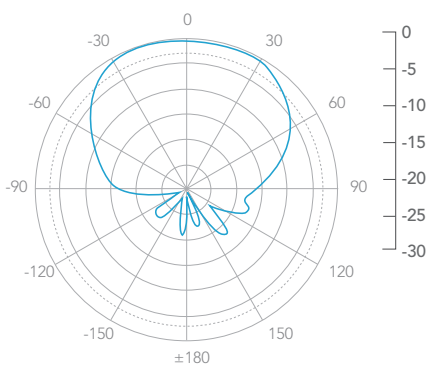
# Specifications

	TL-ANT5819MS
Frequency Range	5.0 - 6.0GHz
Gain*	19dBi
VSWR	1.8 Max
HPOL Beamwidth	120°(6dB) & 90°(3dB)
VPOL Beamwidth	120°(6dB) & 90°(3dB)
Elevation Beamwidth	4°
Electrical Downtilt	0°
F/B Ratio	28dB Min
Impedance	50Ω
Interfaces	RP-SMA
Polarization	Vertical & Horizontal
Mounting	Pole Mount
Survival Wind Speed	241km/h
Standards	RoHS, WEEE

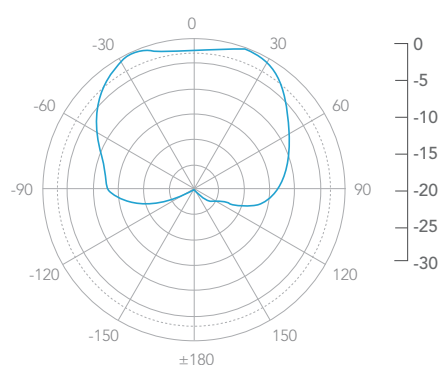
\*Exclude Cable Loss

## Radiation patterns

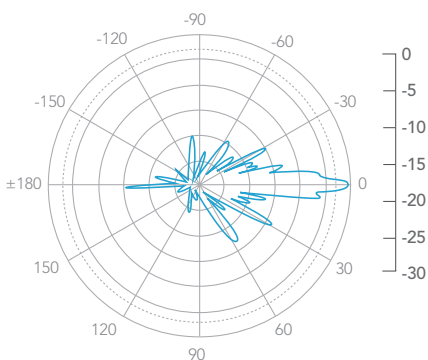
Horizontal Azimuth



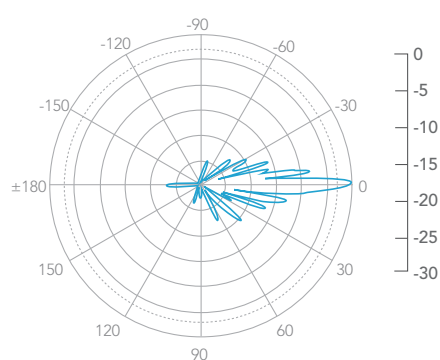
Vertical Azimuth



Horizontal Elevation



Vertical Elevation



# Ordering Information

Ideal to use with



- 5GHz 300Mbps Outdoor Wireless Base Station WBS510



- 2.4GHz 300Mbps Outdoor Wireless Base Station WBS210

## Related Products



- 2.4GHz 300Mbps 9dBi Outdoor CPE CPE210



- 5GHz 30dBi 2x2 MIMO Dish Antenna TL-ANT5830MD



Details:<http://www.tp-link.com/en/Support/German/Austrian/Swiss> users are not included

[www.tp-link.com](http://www.tp-link.com)

Specifications are subject to change without notice. TP-LINK is a registered trademark of TP-LINK Technologies Co., Ltd. Other brands and product names are trademarks or registered trademarks of their respective holders. Copyright © 2015 TP-LINK TECHNOLOGIES CO., LTD. All rights reserved.